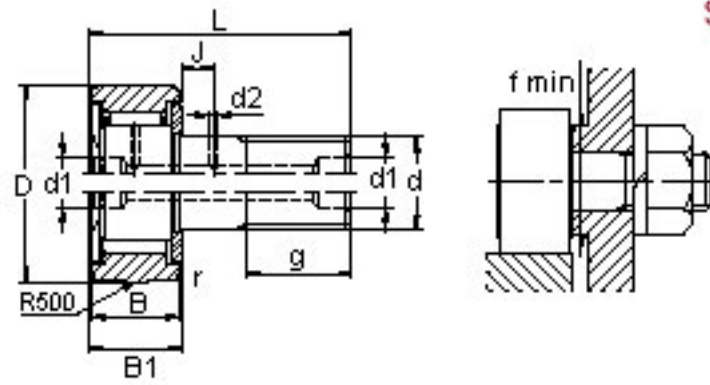


# Stud Type Track rollers

With Slotted Socket  
-Cage Type

Shaft dia, 16-35



KR

KR

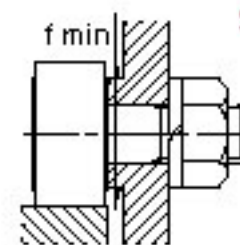
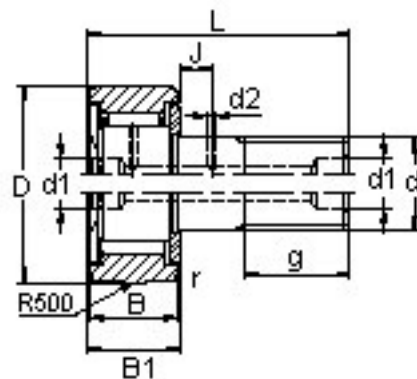
mm			Series		Dimensions mm										Basic load ratings		Working load Max.	Limited speed
D	d	B	Crowned outer ring R 500	Cylindrical outer ring	B1	L	d	g	d1	d2	J	r min	f	Dynamic C kgf	Static Co kgf	kgf	Oil rpm(1)	
16	6	11	KR 16	KR 16 X	12	28	M6x1	9	—	—	—	0.5	9.5	420	440	200	22000	
	6	11	KR 16 PP	KR 16 PPX	12	28	M6x1	9	—	—	—	0.5	9.5	420	440	200	15000	
	6	11	KRV 16	KRV 16 X	12	28	M6x1	9	—	—	—	0.5	9.5	670	810	200	8000	
	6	11	KRV 16 PP	KRV 16 PPX	12	28	M6x1	9	—	—	—	0.5	9.5	670	810	200	6500	
19	8	11	KR 19	KR 19 X	12	32	M8x1.25	11	*4	—	—	0.5	9.5	440	400	470	20000	
	8	11	KR 19 PP	KR 19 PPX	12	32	M8x1.25	11	*4	—	—	0.5	11.5	440	400	470	14000	
	8	11	KRV 19	KRV 19 X	12	32	M8x1.25	11	*4	—	—	0.5	11.5	840	940	470	7000	
	8	11	KRV 19 PP	KRV 19 PPX	12	32	M8x1.25	11	*4	—	—	0.5	11.5	840	940	470	6000	
22	10	12	KR 22	KR 22 X	13	36	M10x1.25	13	*4	—	—	1	13.5	560	700	700	16000	
	10	12	KR 22 PP	KR 22 PPX	13	36	M10x1.25	13	*4	—	—	1	13.5	560	700	700	11000	
	10	12	KRV 22	KRV 22 X	13	36	M10x1.25	13	*4	—	—	1	13.5	950	1420	700	5500	
	10	12	KRV 22 PP	KRV 22 PPX	13	36	M10x1.25	13	*4	—	—	1	13.5	950	1420	700	5000	
26	10	12	KR 26	KR 26 X	13	36	M10x1.25	13	*4	—	—	1	13.5	560	700	700	16000	
	10	12	KR 26 PP	KR 26 PPX	13	36	M10x1.25	13	*4	—	—	1	13.5	560	700	700	11000	
	10	12	KRV 26	KRV 26 X	13	36	M10x1.25	13	*4	—	—	1	13.5	950	1420	700	5500	
	10	12	KRV 26 PP	KRV 26 PPX	13	40	M10x1.25	13	*4	—	—	1	13.5	950	1420	700	5000	
30	12	14	KR 30	KR 30 X	15	40	M12x1.5	14	6	3	6	1.5	17	840	1080	1000	11000	
	12	14	KR 30 PP	KR 30 PPX	15	40	M12x1.5	14	6	3	6	1.5	17	840	1080	1000	8000	
	12	14	KRV 30	KRV 30 X	15	40	M12x1.5	14	6	3	6	1.5	17	1510	2300	1000	4000	
	12	14	KRV 30 PP	KRV 30 PPX	15	40	M12x1.5	14	6	3	6	1.5	17	1510	2300	1000	3500	
32	12	14	KR 32	KR 32 X	15	40	M12x1.5	14	6	3	6	1.5	17	840	1080	1000	11000	
	12	14	KR 32 PP	KR 32 PPX	15	40	M12x1.5	14	6	3	6	1.5	17	840	1080	1000	8000	
	12	14	KRV 32	KRV 32 X	15	40	M12x1.5	14	6	3	6	1.5	17	1510	2300	1000	4000	
	12	14	KRV 32 PP	KRV 32 PPX	15	40	M12x1.5	14	6	3	6	1.5	17	1510	2300	1000	3500	
35	16	18	KR 35	KR 35 X	19.5	52	M16x1.5	18	6	3	8	1.5	22	1180	1830	1850	8500	
	16	18	KR 35 PP	KR 35 PPX	19.5	52	M16x1.5	18	6	3	8	1.5	22	1180	1830	1850	6000	
	16	18	KRV 35	KRV 35 X	19.5	52	M16x1.5	18	6	3	8	1.5	22	1860	3340	1850	3000	
	16	18	KRV 35 PP	KRV 35 PPX	19.5	52	M16x1.5	18	6	3	8	1.5	22	1860	3340	1850	2500	

\* Lubrication hole is in the end face only at the ribbed end of the stud.  
With oil lubrication, 130% of the values given in the tables are permissible.

# Stud Type Track rollers

With Slotted Socket

-Cage Type



Shaft dia. 40-90

KR

KR

mm			Series		Dimensions mm									Basic load ratings		Working load Max.	Limited speed
D	d	B	Crowned outer ring R 500	Cylindrical outer ring	B1	L	d	g	d1	d2	J	r min	f	Dynamic C kgf	Static Co kgf	kgf	Oil rpm(1)
40	18	20	KR 40	KR 40 X	21.5	58	M18x1.5	20	6	3	8	1.5	26	1780	2760	2550	7000
	18	20	KR 40 PP	KR 40 PPX	21.5	58	M18x1.5	20	6	3	8	1.5	26	1780	2760	2550	5000
	18	20	KRV 40	KRV 40 X	21.5	58	M18x1.5	20	6	3	8	1.5	26	2710	4800	2550	2500
	18	20	KRV 40 PP	KRV 40 PPX	21.5	58	M18x1.5	20	6	3	8	1.5	26	2710	4800	2550	2100
47	20	24	KR 47	KR 47 X	25.5	66	M20x1.5	22	8	4	9	1.5	32.5	1960	3230	3250	6500
	20	24	KR 47 PP	KR 47 PPX	25.5	66	M20x1.5	22	8	4	9	1.5	32.5	1960	3230	3250	5000
	20	24	KRV 47	KRV 47 X	25.5	66	M20x1.5	22	8	4	9	1.5	32.5	3360	6580	3250	2500
	20	24	KRV 47 PP	KRV 47 PPX	25.5	66	M20x1.5	22	8	4	9	1.5	32.5	3360	6580	3250	2000
52	20	24	KR 52	KR 52 X	25.5	66	M20x1.5	22	8	4	9	1.5	32.5	2920	4430	3250	6500
	20	24	KR 52 PP	KR 52 PPX	25.5	66	M20x1.5	22	8	4	9	1.5	32.5	2920	4430	3250	5000
	20	24	KRV 52	KRV 52 X	25.5	66	M20x1.5	22	8	4	9	1.5	32.5	4270	7300	3250	2500
	20	24	KRV 52 PP	KRV 52 PPX	25.5	66	M20x1.5	22	8	4	9	1.5	32.5	4270	7300	3250	2000
62	24	29	KR 62	KR 62 X	30.5	80	M24x1.5	25	8	4	11	1.5	35	3170	4910	4550	5500
	24	29	KR 62 PP	KR 62 PPX	30.5	80	M24x1.5	25	8	4	11	1.5	35	3170	4910	4550	4000
	24	29	KRV 62	KRV 62X	30.5	80	M24x1.5	25	8	4	11	1.5	35	5330	9760	4550	2000
	24	29	KRV 62 PP	KRV 62 PPX	30.5	80	M24x1.5	25	8	4	11	1.5	35	5330	9760	4550	1700
72	24	29	KR 72	KR 72 X	30.5	80	M24x1.5	25	8	4	11	1.5	35	3170	4910	4550	5500
	24	29	KR 72 PP	KR 72 PPX	30.5	80	M24x1.5	25	8	4	11	1.5	35	3170	4910	4550	4000
	24	29	KRV 72	KRV 72 X	30.5	80	M24x1.5	25	8	4	11	1.5	35	5330	9760	4550	2000
	24	29	KRV 72 PP	KRV 72 PPX	30.5	80	M24x1.5	25	8	4	11	1.5	35	5330	9760	4550	1700
80	30	35	KR 80	KR 80 X	37	100	M30x1.5	32	8	4	15	2	42.5	4660	8220	7500	4000
	30	35	KR 80 PP	KR 80 PPX	37	100	M30x1.5	32	8	4	15	2	42.5	4660	8220	7500	3000
	30	35	KRV 80	KRV 80 X	37	100	M30x1.5	32	8	4	15	2	42.5	7210	14600	7500	1500
	30	35	KRV 80 PP	KRV 80 PPX	37	100	M30x1.5	32	8	4	15	2	42.5	7210	14600	7500	1200
85	30	35	KR 85	KR 85 X	37	100	M30x1.5	32	8	4	15	2	42.5	4660	8220	7500	4000
	30	35	KR 85 PP	KR 85 PPX	37	100	M30x1.5	32	8	4	15	2	42.5	4660	8220	7500	3000
	30	35	KRV 85	KRV 85 X	37	100	M30x1.5	32	8	4	15	2	42.5	7210	14600	7500	1500
	30	35	KRV 85 PP	KRV 85 PPX	37	100	M30x1.5	32	8	4	15	2	42.5	7210	14600	7500	1200
90	30	35	KR 90	KR 90 X	37	100	M30x1.5	32	8	4	15	2	42.5	4660	8220	7500	4000
	30	35	KR 90 PP	KR 90 PPX	37	100	M30x1.5	32	8	4	15	2	42.5	4660	8220	7500	3000
	30	35	KRV 90	KRV 90 X	37	100	M30x1.5	32	8	4	15	2	42.5	7210	14600	7500	1500
	30	35	KRV 90 PP	KRV 90 PPX	37	100	M30x1.5	32	8	4	15	2	42.5	7210	14600	7500	1200

\* Lubrication hole is in the end face only at the ribbed end of the stud.

With oil lubrication, 130% of the values given in the tables are permissible.