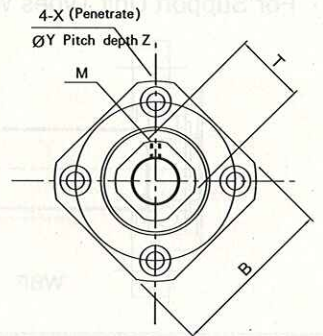
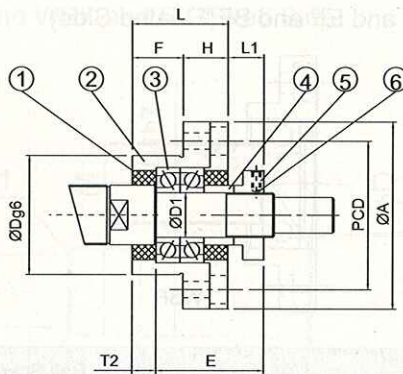




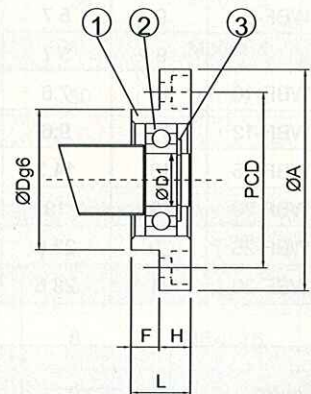
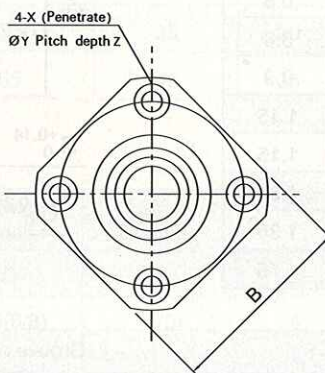
### WBK Fixed Side



Unit: mm

Model No.	D1	L	H	F	E	Dg6	A	PCD	B	L1	T1	X	Y	Z
WBK-6	6	20	7	13	22	22	36	28	28	5.5	3.5	3.4	6.5	4
WBK-8	8	23	9	14	26	28	43	35	35	7	4	3.4	6.5	4
WBK-10	10	27	10	17	29.5	34	52	42	42	7.5	5	4.5	8	4
WBK-12	12	27	10	17	29.5	36	54	44	44	7.5	5	4.5	8	4
WBK-15	15	32	15	17	36	40	63	50	52	10	6	5.5	9.5	6
WBK-20	20	52	22	30	50	57	85	70	68	8	10	6.6	11	10
WBK-25	25	57	27	30	60	63	98	80	79	13	10	9	15	13
WBK-30	30	62	30	32	61	75	117	95	93	11	12	11	17.5	15

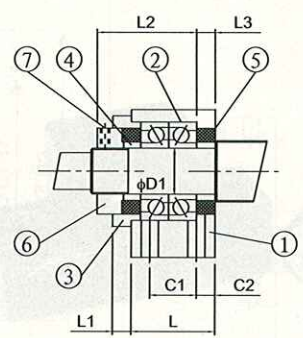
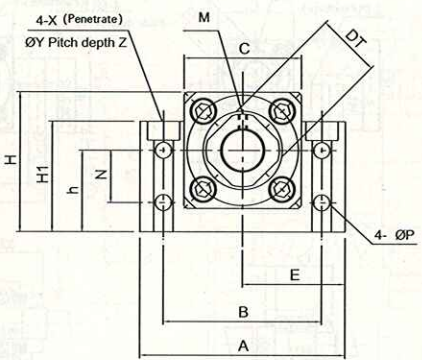
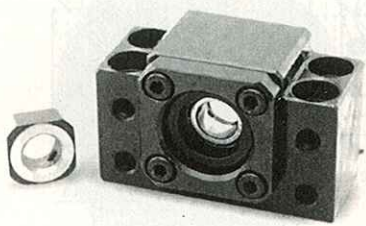
### WBF Floated Side



Unit: mm

Model No.	D1	L	H	F	D	A	PCD	B	X	Y	Z
WBF-6	6	10	6	4	22	36	28	28	3.4	6.5	4
WBF-10	8	12	7	5	28	43	35	35	3.4	6.5	4
WBF-12	10	15	7	8	34	52	42	42	4.5	8	4
WBF-15	15	17	9	8	40	63	50	52	5.5	9.5	5.5
WBF-20	20	20	11	9	57	85	70	68	6.6	11	6.5
WBF-25	25	24	14	10	63	98	80	79	9	14	8.5
WBF-30	30	27	18	9	75	117	95	93	11	17.5	11

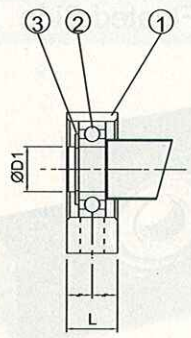
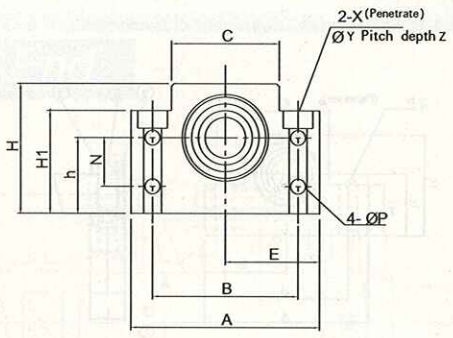
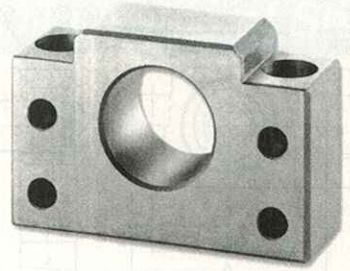
**BK Fixed Side**



Unit:mm

Model No.	D1	L	L1	L2	L3	C1	C2	A	H	E <sup>±0.02</sup>	h <sup>±0.02</sup>	C	H1	N	B	P	X	Y	Z
BK-10	10	25	6	29	5	13	6	60	39	30	22	34	32.5	15	46	5.5	6.6	11	5
BK-12	12	25	6	29	5	13	6	60	43	30	25	35	32.5	18	46	5.5	6.6	11	6.5
BK-15	15	27	6	32	6	15	6	70	48	35	28	40	38	18	54	5.5	6.6	11	6.5
BK-17	17	35	9	44	7	19	8	86	64	43	39	50	55	28	68	6.6	9	14	8.5
BK-20	20	35	8	43	8	19	8	88	60	44	34	52	50	22	70	6.6	9	14	8.5
BK-25	25	42	12	54	9	22	10	106	80	53	48	64	70	33	85	9	11	17.5	11
BK-30	30	45	14	61	9	23	11	128	89	64	51	76	78	33	102	11	14	20	13
BK-35	35	50	14	67	12	26	12	140	96	70	52	88	79	35	114	11	14	20	13
BK-40	40	61	18	76	15	33	14	160	110	80	60	100	90	37	130	14	18	26	17.5

**BF Fixed Side**

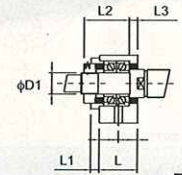
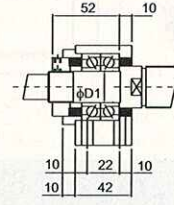
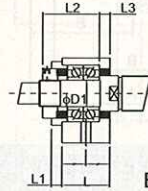
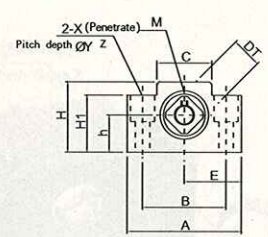
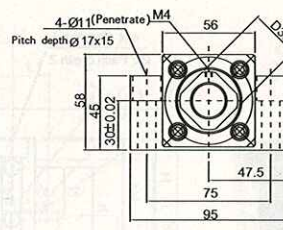
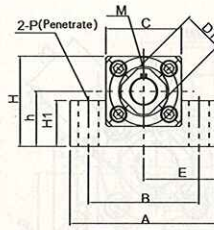
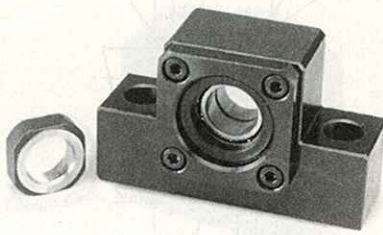


Unit:mm

Model No.	D1	L	A	H	E <sup>±0.02</sup>	h <sup>±0.02</sup>	C	H1	N	B	P	X	Y	Z
BF-10	8	20	60	39	30	22	34	32.5	15	46	5.5	6.6	11	5
BF-12	10	20	60	43	30	25	35	32.5	18	46	5.5	6.6	11	6.5
BF-15	15	20	70	48	35	28	40	38	18	54	5.5	6.6	11	6.5
BF-17	17	23	86	64	43	39	50	55	28	68	6.6	9	14	8.5
BF-20	20	26	88	60	44	34	52	50	22	70	6.6	9	14	8.5
BF-25	25	30	106	80	53	48	64	70	33	85	9	11	17.5	11
BF-30	30	32	128	89	64	51	76	78	33	102	11	14	20	13
BF-35	35	32	140	96	70	52	88	79	35	114	11	14	20	13
BF-40	40	37	160	110	80	60	100	90	37	130	14	18	26	17.5



## EK Fixed Side



EK-10-15

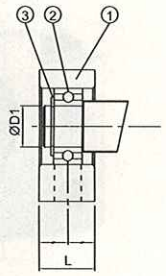
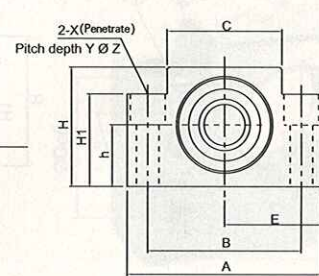
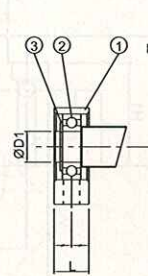
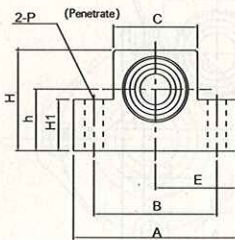
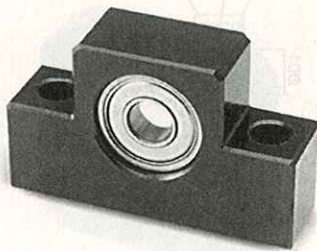
EK-20

EK-6-8

Unit: mm

Model No.	D1	L	L1	L2	L3	A	H	E <sup>±0.02</sup>	h <sup>±0.02</sup>	C	H1	B	X	Y	Z
EK-6	6	20	5.5	22	3.5	42	25	21	13	18	20	30	5.5	9.5	11
EK-8	8	23	7	26	4	52	32	26	17	25	26	38	6.6	11	12
EK-10	10	24	6	29.5	6	70	43	35	25	36	24	52	9	-	-
EK-12	12	24	6	29.5	6	70	43	35	25	36	24	52	9	-	-
EK-15	15	25	6	36	5	80	49	40	30	41	25	60	11	-	-
EK-20	20	42	10	50	10	95	58	47.5	30	56	45	75	11	17	15

## EF Floated Side



EF-10-15

EF-6-8 EF-20

Unit: mm

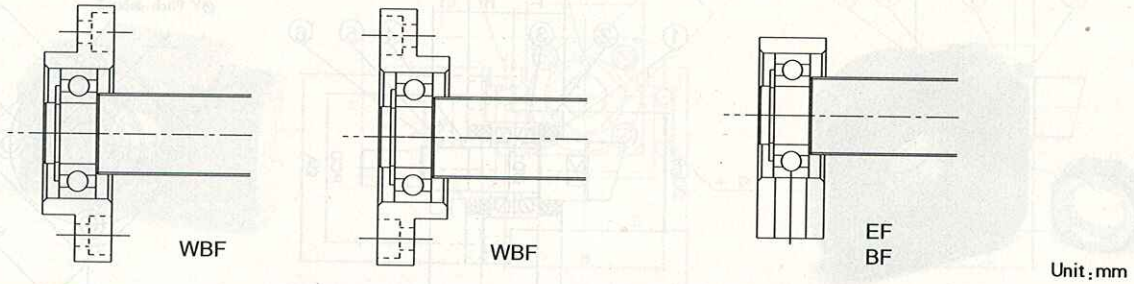
Model No.	D1	L	A	H	E <sup>±0.02</sup>	h <sup>±0.02</sup>	C	H1	B	P	X	Y	Z
EF-6	6	12	42	25	21	13	18	20	30	-	5.5	9.5	11
EF-8	6	14	52	32	26	17	25	26	38	-	6.6	11	12
EF-10	8	20	70	43	35	25	36	24	52	9	-	-	-
EF-12	10	20	70	43	35	25	36	24	52	9	-	-	-
EF-15	15	20	80	49	40	30	41	25	60	9	-	-	-
EF-20	20	26	95	58	47.5	30	56	45	75	-	11	17	15



## Recommended Shaft End Shape

-WBF, EF, BF

For Support Unit Types WBF and EF and BF(Floated Side)

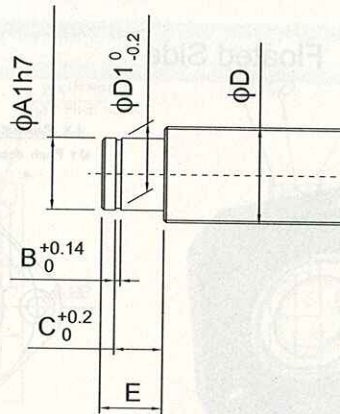


Unit: mm

Model No.			Ball Srew Diameter	Shaft Diameter
WBF	EF	BF	d	D1
WBF-6	EF-6	-	10/12(6/8)	6
-	EF-8	-	10/12	6
WBF-10	EF-10	BF-10	12/14/15	8
WBF-12	EF-12	BF-12	14/15/16	10
WBF-15	EF-15	BF-15	18/20	15
-	-	BF-17	20/25	17
WBF-20	EF-20	BF-20	25/28	20
WBF-25	-	BF-25	32/36	25
WBF-30	-	BF-30	36/40	30
-	-	BF-35	40/45/50	35
-	-	BF-40	50/55	40

The dimensions are EK Type's in Parentheses

Model No.		Groove of retaining ring			
		E	A	C	B
EF-6	WBF-6	9	5.7	6.8	0.8
EF-8	-	9	5.7	6.8	0.8
EF-10	WBF-10	10	7.6	7.9	0.9
EF-12	WBF-12	11	9.6	9.15	1.15
EF-15	WBF-15	13	14.3	10.15	1.15
EF-20	WBF-20	19	19	15.35	1.35
-	WBF-25	20	23.9	16.35	1.35
-	WBF-30	21	28.6	17.75	1.75



Unit: mm

Model No.	Groove of Retaining Ring			
	E	A	C	B
BF-10	10	7.6	7.9	0.9
BF-12	11	9.6	9.15	1.15
BF-15	13	14.3	10.15	1.15
BF-17	16	16.2	13.15	1.15
BF-20	16	19.0	13.35	1.35
BF-25	20	23.9	16.35	1.35
BF-30	21	28.6	17.75	1.75
BF-35	22	33.0	18.75	1.75
BF-40	23	38.0	19.95	1.95