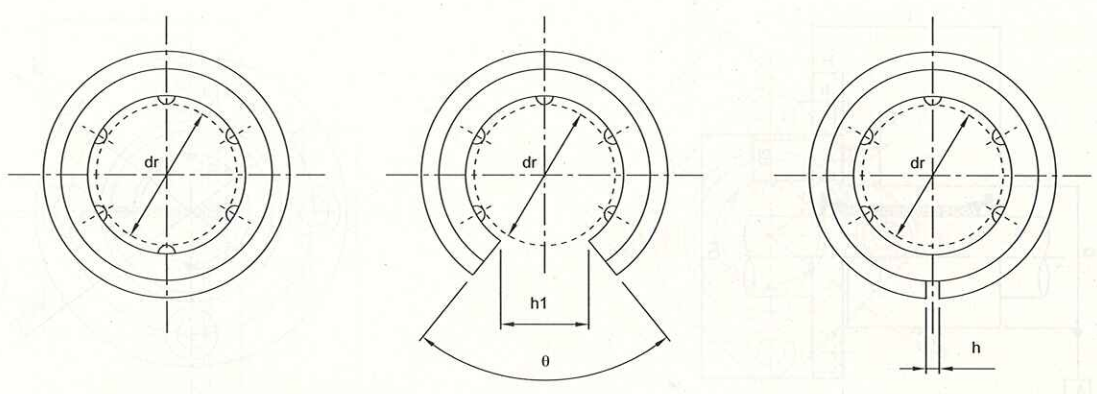
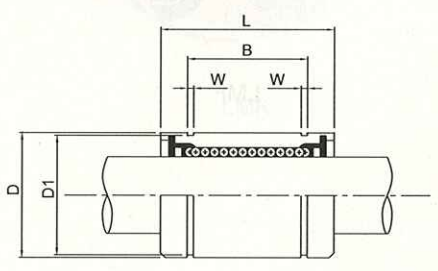
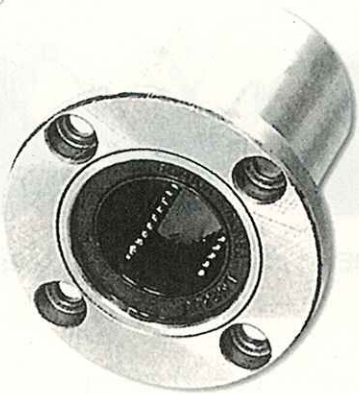




Model No.								
Standard Type	Ball circuit	Open Type	Ball circuit	Adjustable Type	Ball circuit	Weight (g)	dr (mm)	Tolerance (μm)
LME5UU	4	-	-	LME5UUAJ	4	12	5	+8
LME8UU	4	-	-	LME8UUAJ	4	20	8	0
LME12UU	4	-	-	LME12UUAJ	4	41	12	-1
LME16UU	4	LME16UUOP	4	LME16UUAJ	5	57	16	+9
LME20UU	5	LME20UUOP	4	LME20UUAJ	5	91	20	-1
LME25UU	6	LME25UUOP	5	LME25UUAJ	6	215	25	+11
LME30UU	6	LME30UUOP	5	LME30UUAJ	6	325	30	-1
LME40UU	6	LME40UUOP	5	LME40UUAJ	6	705	40	+13
LME50UU	6	LME50UUOP	5	LME50UUAJ	6	1130	50	-2
LME60UU	6	LME60UUOP	5	LME60UUAJ	6	2220	60	

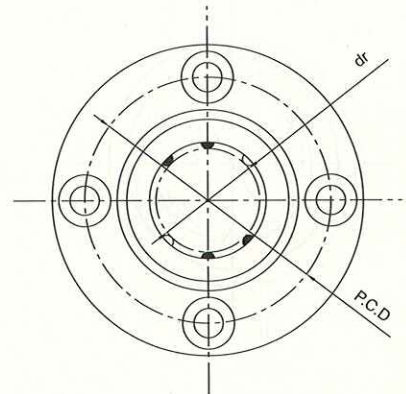
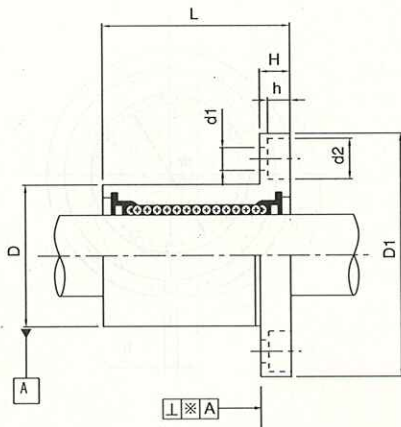


Nominal Part No	Main Dimensions and Precision (mm)											Radial clearance (max) μm	Basic Load Rating	
	D (mm)	Tolerance (μm)	L (mm)	Tolerance (μm)	B (mm)	Tolerance (μm)	W (mm)	D1 (mm)	h (mm)	h1 (mm)	θ		Dynamic C	Static CO
LME5UU	12	0	22		14.5	0	1.1	11.5	1	-	-	-5	20	27
LME8UU	16	-8	25	0	16.5	-0.2	1.1	15.2	1	-	-	-5	27	41
LME12UU	22	0	32	-0.2	22.9		1.3	21	1.5	-	-	-7	51	78
LME16UU	26	-9	36		24.9		1.3	24.9	1.5	10	78°	-7	58	91
LME20UU	32	0	45		31.5		1.6	30.3	2	10	60°	-9	88	139
LME25UU	40	-11	58		44.1	0	1.85	37.5	2	12.5	60°	-9	100	159
LME30UU	47		68	0	52.1	-0.3	1.85	44.5	2	12.5	50°	-9	159	279
LME40UU	62	0	80	-0.3	60.6		2.15	59	3	16.8	50°	-13	219	409
LME50UU	75	-13	100		77.6		2.65	72	3	21	50°	-13	389	808
LME60UU	90	0/-15	125	0/-0.4	101.7	0/-0.4	3.15	86.5	3	27.2	54°	-16	479	1019



LMF

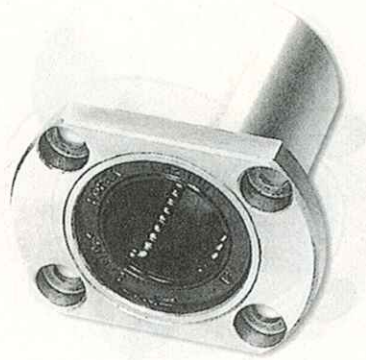
Model No.				Basic Load Rating(kgf)		dr (mm)	Tolerance (μm)
Round Flange Type	Ball circuit	Weight (g)	Radial clearance (max) μm	Dynamic C	Static CO		
LMF6UU	4	26.5	-5	20	27	6	0 -9
LMF8UU	4	40	-5	27	41	8	
LMF10UU	4	78	-5	38	55	10	
LMF12UU	4	76	-5	42	60	12	
LMF13UU	4	94	-7	51	78	13	0 -10
LMF16UU	5	134	-7	78	119	16	
LMF20UU	5	180	-9	88	140	20	
LMF25UU	6	340	-9	100	159	25	
LMF30UU	6	460	-9	159	279	30	0 -12
LMF35UU	6	795	-13	169	319	35	
LMF40UU	6	1054	-13	219	409	40	
LMF50UU	6	2200	-13	389	808	50	
LMF60UU	6	2960	-13	479	1019	60	0/-15



LMF

Linear Bearing

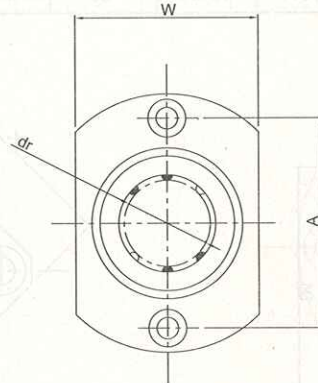
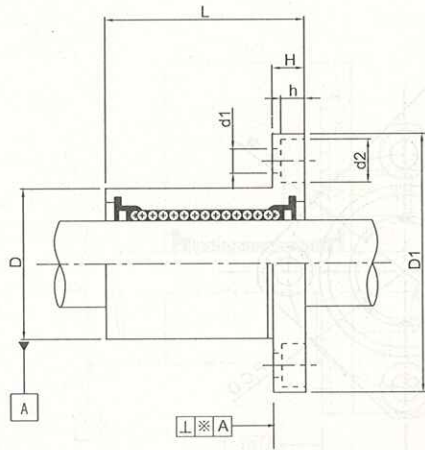
Nominal Part No	Main Dimensions and Precision (mm)								Right Angle ※ (μm)	d1 × d2 × h
	D (mm)	Tolerance (μm)	L (mm)	Tolerance (μm)	D1 (mm)	Tolerance (μm)	H	PCD		
LMF6UU	12	0	19	0 -0.2	28	0 -0.2	5	20	12	3.4 × 6.5 × 3.3
LMF8UU	15	-11	24		32		5	24	12	3.4 × 6.5 × 3.3
LMF10UU	19	0	29		40		6	29	12	4.5 × 8 × 4.4
LMF12UU	21		30		42		6	32	12	4.5 × 8 × 4.4
LMF13UU	23	-13	32	43	6	33	12	4.5 × 8 × 4.4		
LMF16UU	28	0 -16	37	48	6	38	12	4.5 × 8 × 4.4		
LMF20UU	32		42	54	8	43	15	5.5 × 9.5 × 5.4		
LMF25UU	40		59	62	8	51	15	5.5 × 9.5 × 5.4		
LMF30UU	45		64	74	10	60	15	6.6 × 11 × 6.5		
LMF35UU	52	0 -19	70	82	10	67	20	6.6 × 11 × 6.5		
LMF40UU	60		80	96	13	78	20	9 × 14 × 8.6		
LMF50UU	80		100	116	13	98	20	9 × 14 × 8.6		
LMF60UU	90		0/-22	110	134	18	112	25	11 × 17.5 × 10.8	



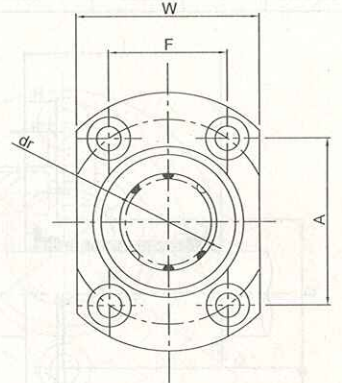
LMH

Round Flange Type	Model No.			Basic Load Rating (kgf)		dr (mm)	Tolerance (μm)
	Ball circuit	Weight (g)	Radial clearance (max) μm	Dynamic C	Static CO		
LMH6UU	4	26.5	-5	20	27	6	
LMH8UU	4	40	-5	27	41	8	0
LMH10UU	4	78	-5	38	55	10	-9
LMH12UU	4	76	-5	42	60	12	
LMH13UU	4	94	-7	51	78	13	
LMH16UU	5	134	-7	78	119	16	
LMH20UU	5	180	-9	88	140	20	0
LMH25UU	6	340	-9	100	159	25	-10
LMH30UU	6	460	-9	159	279	30	

Linear Bearing

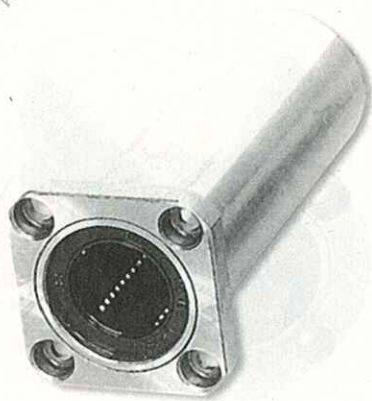


LMH13 below



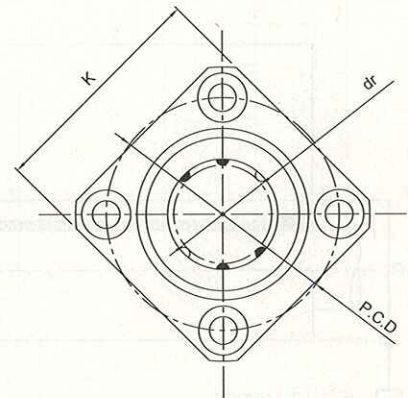
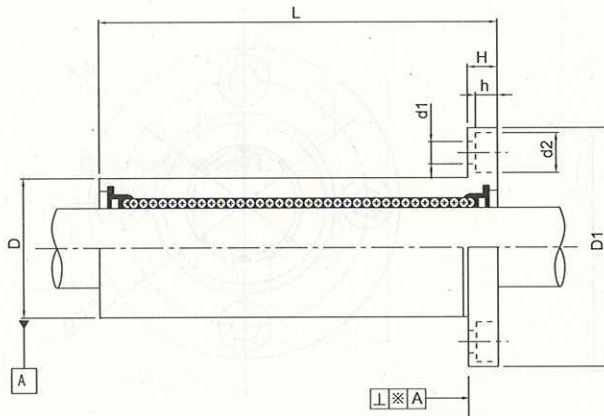
above LMH16

Nominal Part No	Main Dimensions and Precision (mm)										Right Angle ⊗ (μm)	d1 × d2 × h
	D (mm)	Tolerance (μm)	L (mm)	Tolerance (μm)	D1 (mm)	Tolerance (μm)	H	W	A	F		
LMH6UU	12	0	19	-0.2	28	0 -0.2	5	18	20	-	12	3.4 × 6.5 × 3.3
LMH8UU	15	-11	24		32		5	21	24	-	12	3.4 × 6.5 × 3.3
LMH10UU	19	0	29	39	6		25	29	-	12	4.5 × 8 × 4.4	
LMH12UU	21	-13	30	42	6		27	32	-	12	4.5 × 8 × 4.4	
LMH13UU	23		32	43	6		29	33	-	12	4.5 × 8 × 4.4	
LMH16UU	28		37	48	6		34	31	22	12	4.5 × 8 × 4.4	
LMH20UU	32		42	54	8		38	36	24	15	5.5 × 9.5 × 5.4	
LMH25UU	40	0	59	62	8		46	40	32	15	5.5 × 9.5 × 5.4	
LMH30UU	45	-16	64	74	10		51	49	35	15	6.6 × 11 × 6.5	



LMK L

Model No.				Basic Load Rating (kgf)		dr (mm)	Tolerance (μm)
Square Flange Type	Ball circuit	Weight (g)	Radial clearance (max) μm	Dynamic C	Static CO		
LMK6LUU	4	31	-5	32	53	6	0 -10
LMK8LUU	4	53	-5	44	80	8	
LMK10LUU	4	105	-5	59	112	10	
LMK12LUU	4	100	-5	66	122	12	0 -12
LMK13LUU	4	130	-7	83	160	13	
LMK16LUU	5	187	-7	125	240	16	
LMK20LUU	5	260	-9	143	280	20	0 -15
LMK25LUU	6	515	-9	159	320	25	
LMK30LUU	6	655	-9	254	560	30	
LMK35LUU	6	970	-13	270	660	35	0 -15
LMK40LUU	6	1560	-13	350	820	40	
LMK50LUU	6	3500	-13	620	1622	50	
LMK60LUU	6	4500	-13	780	2040	60	0/-20



LMK L

7

Linear Bearing

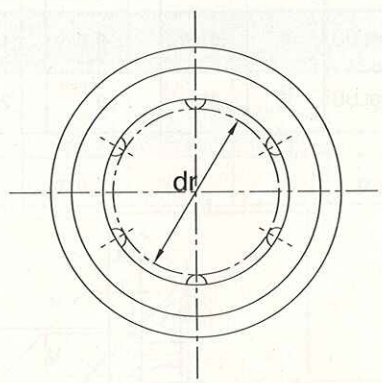
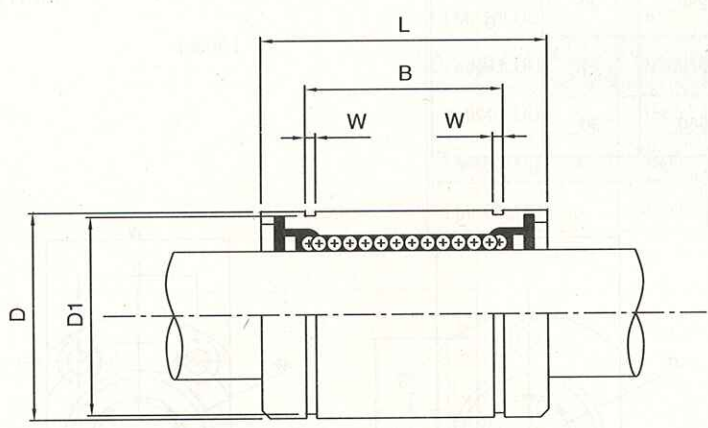
Nominal Part No	Main Dimensions and Precision (mm)									Right Angle ※ (μm)	d1 × d2 × h
	D (mm)	Tolerance (μm)	L (mm)	Tolerance (μm)	K (mm)	Tolerance (μm)	D1	H	PCD		
LMK6LUU	12	0	35	0 -0.3	22	0 -0.2	28	5	20	15	3.4 × 6.5 × 3.3
LMK8LUU	15	-13	45		25		32	5	24	15	3.4 × 6.5 × 3.3
LMK10LUU	19		55		30		40	6	29	15	4.5 × 8 × 4.4
LMK12LUU	21	0	57	0 -0.4	32	0 -0.3	42	6	32	15	4.5 × 8 × 4.4
LMK13LUU	23	-16	61		34		43	6	33	15	4.5 × 8 × 4.4
LMK16LUU	28		70		37		48	6	38	15	4.5 × 8 × 4.4
LMK20LUU	32	0	80	0 -0.4	42	0 -0.3	54	8	43	20	5.5 × 9.5 × 5.4
LMK25LUU	40	-19	112		50		62	8	51	20	5.5 × 9.5 × 5.4
LMK30LUU	45		123		58		74	10	60	20	6.6 × 11 × 6.5
LMK35LUU	52	0	135	0 -0.4	64	0 -0.3	82	10	67	25	6.6 × 11 × 6.5
LMK40LUU	60	-22	154		75		96	13	78	25	9 × 14 × 8.6
LMK50LUU	80		192		92		116	13	98	25	9 × 14 × 8.6
LMK60LUU	90	0/-25	211	106	134	18	112	25	11 × 17.5 × 10.8		



HSK



LML



Linear Bearing

Model No.													Basic Load Rating (kgf)	
Standard Type	Ball circuit	dr		D		L		B		W (mm)	D1 (mm)	Weight (g)	Dynamic C	Static CO
		(mm)	Tolerance (μm)	(mm)	Tolerance (μm)	(mm)	Tolerance (μm)	(mm)	Tolerance (μm)					
LM6LUU	4	6	0	12	0	35	0	27	0	1.1	11.5	16	32	53
LM8LUU	4	8		15	-13	45		35		1.1	14.3	31	44	80
LM10LUU	4	10	-10	19	0	55	-0.3	44	-0.3	1.3	18	62	59	112
LM12LUU	4	12		21		0		57		46	1.3	20	80	66
LM13LUU	4	13	0	23	-16	61	0	46	0	1.3	22	90	83	160
LM16LUU	5	16		28	0	70		53		1.6	27	145	125	240
LM20LUU	5	20	-12	32	0	80	0	61	0	1.6	30.5	180	143	280
LM25LUU	6	25		40	-19	112		82		1.85	38	440	159	320
LM30LUU	6	30	0	45	0	123	-0.4	89	-0.4	1.85	43	580	254	560
LM35LUU	6	35		52		0		135		99	2.1	49	795	270
LM40LUU	6	40	-15	60	-22	154	0	121	0	2.1	57	1170	350	820
LM50LUU	6	50		80	0	192		148		2.6	76.5	3100	620	1622
LM60LUU	6	60	0/-20	90	0/-25	211	0	170	0	3.15	86.5	3500	780	2040

